

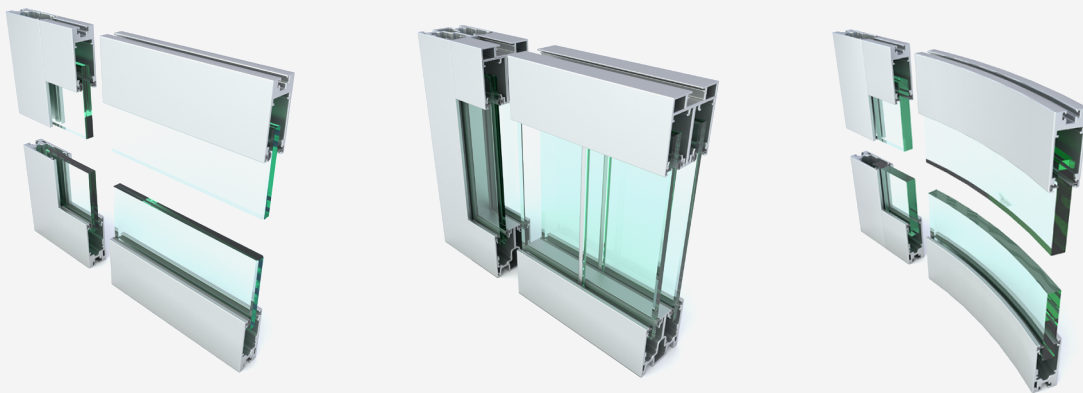
FINO[®]

Product Sheet

FINO is a leader in innovation and engineering with superior quality in performance and design. With the thinnest profile of any Muraflex partition, single, double, and curved glazing, and a stunning range of customization options, FINO is a powerful aesthetic choice. Between FINO's perfectly aligned profiles and the ingeniously concealed mechanisms, FINO boasts sleek and refined.



Extrusions



Glazing and Panels:

- Single glazed, double glazed, single glazed curved and double glazed curved
- Thickness: ½" and ¾"
- Tempered, laminated, low iron (extra clear), and speciality glass

Tolerance:

- Total of 1-¼"

Junctions:

- Available in polycarbonate
- Glass to glass, corner (L), and T condition

Gaskets:

- Door: available in black, white, and clear
- Wall: available in black, white, and grey

Ceiling Condition:

- Installed on a bulk ceiling
- Maximum height of 10'

Acoustical properties:

- Single glazed tested STC assembly score ranges (depending on options): 34 - 38
- Double glazed tested STC assembly score ranges (depending on options): 43- 45

Integrated electrical components:

- High and low voltage wiring
- Integrated electrical components including room scheduler, card reader, and electrical strike available
- Panic hardware available

Doors:

- Framed
- Standard Muraflex single pivot door
 - Standard Muraflex double glazed pivot door
 - Standard Muraflex single sliding door featuring the Click
 - Standard Muraflex double glazed sliding door featuring the Click

Wood

- Pivot door
- Sliding door

Standard door hardware

- Lever or ladder pull
- Locking or non-locking
- Drop seal available on framed doors and wood sliding door
- Hold open available on all swing doors
- Soft open/close available on all sliding doors

Maximum door height: 10'

Profile:

Stick built

Profile dimensions:

- Single glazed top and bottom extrusion: W1" x H2-3/8"
- Double glazed top and bottom extrusion: W2-3/8" x H2-3/8"
- Single glazed mini sill extrusion: W1" x H1-11/16"
- Smallest radius on curved glazing: 12"
- Sliding single or double glazed door adds W1-3/4"

Aluminum

- Applied and integrated mullions available
- Aluminum and wood flyby available

Lead times:

- Black Anodized, Clear Anodized, and Powder Coats: 6-8 weeks
- Specialty and custom: finishes, glass, hardware etc.: +8 weeks

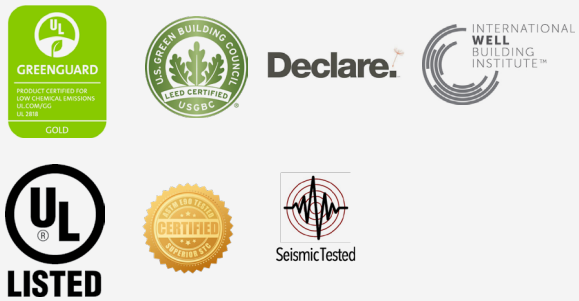
FINO[®]

Sustainability & Finishes

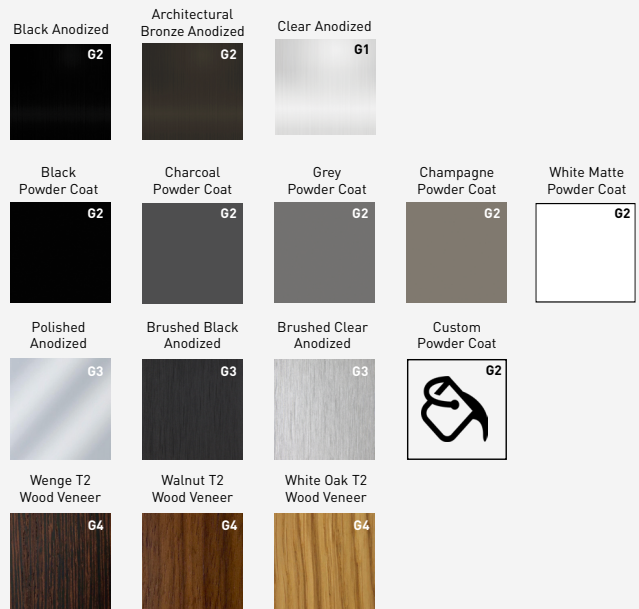


Sustainability

At Muraflex, we are dedicated to diminishing our impact on the environment. We are also committed to continually improving our procedures in terms of product development, supply, packaging and distribution in an effort to minimize our environmental footprint.



The Finishes



Due to variances in screen calibration or print quality, finish images may not accurately represent the actual color sample.