

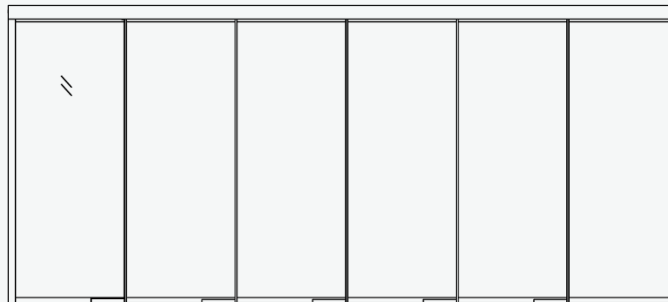
# EXP0



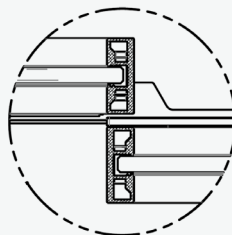
## Product Sheet

EXP02 makes any space adaptable and dynamic, allowing for instant transformations between fully open space and private work and meeting areas. The telescoping doors features single or double framed glass panes with drop seals for superior acoustics, a synchronized pulley system for a flush profile when open or closed, an integrated handle, and a stunning look in any Muraflex finish

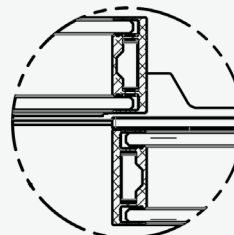
## Extrusions



Closed position



Single glazed closed position



Double glazed closed position

# EXPO



## Glazing and Panels:

Simple glazed framed, double glazed framed, and wood panes  
Thickness: 1/2" and 3/8"  
Tempered, laminated, low iron (extra clear), and speciality glass

## Profile:

Door system  
Aluminum  
Profile dimensions:

- Single and double glazed top extrusion: W1-3/4" x H7/8"
- Single and double glazed bottom extrusion: W1-3/4" x H7/8"
- Single and double glazed stiles extrusion: W5/8" x H1-3/4"
- Fix panel jamb and bottom extrusion: W1" x H2-3/8"
- Valance: H4"

## Doors:

Synchronized pulley system  
Left stacking, right stacking & center split  
Flushed profiles in closed and open position  
Standard door hardware:  
Flat or beveled integrated pull handle  
Ladder pull  
Drop seal  
Soft close/open available on manual system

## Tolerance:

Total of 1/8"

## Gaskets:

Available in black, white, and clear

## System limitations:

Requires structural beam  
Maximum height of 10'  
Maximum 120 kg per door  
Maximum 5 doors (600 kg) on motorized system

## Acoustical properties:

Single glazed STC assembly score ranges estimated to be: 34-38  
Double glazed STC assembly score ranges estimated to be: 43-46

## Integrated electrical components:

Motorized system  
Obstacle detection  
High and low voltage wiring  
Integrated electrical components including room scheduler, card reader, and electrical strike available  
Switchable glass available

## Lead times:

12-14 weeks  
16+ weeks on custom system

## Sustainability

At Muraflex, we are dedicated to diminishing our impact on the environment. We are also committed to continually improving our procedures in terms of product development, supply, packaging and distribution in an effort to minimize our environmental footprint.



## The Finishes

Black Anodized G2	Architectural Bronze Anodized G2	Medium Bronze Anodized G2	Champagne Anodized G2	Clear Anodized G1	
Black Powder Coat G2	Charcoal Powder Coat G2	Grey Powder Coat G2	Champagne Powder Coat G2	White Matte Powder Coat G2	Custom Powder Coat G2
Brushed Black Anodized G3	Brushed Clear Anodized G3	Polished Anodized G3			

Due to variances in screen calibration or print quality, finish images may not accurately represent the actual color sample.