

EXPO

muraflex

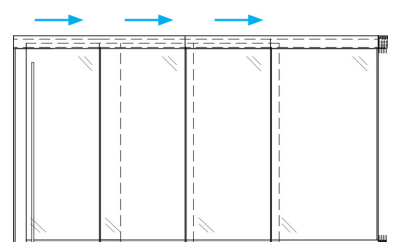
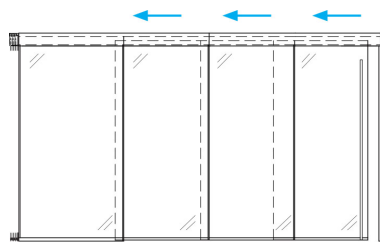
MULTIPLY YOUR OPTIONS. EXPONENTIALLY.

EXPO is a complete ceiling-hung telescopic wall system which uses a unique interlocking frame on the bottom of each glass panel in order to stabilize the system. With EXPO, creating a seamless aesthetic division of any space is simpler than ever before as there is no need to interrupt expensive flooring to install a bottom track as the system simply hovers above the finished floor. Most often used in reception areas and for conference rooms, EXPO has no limitations. Until now, the widest clear opening Muraflex has installed ran over a span of 55 lineal feet and was comprised of 20 panels. EXPO's telescoping system is designed as such that each glass panel runs on its own independent track, allowing the panels to stack nicely one behind the other.



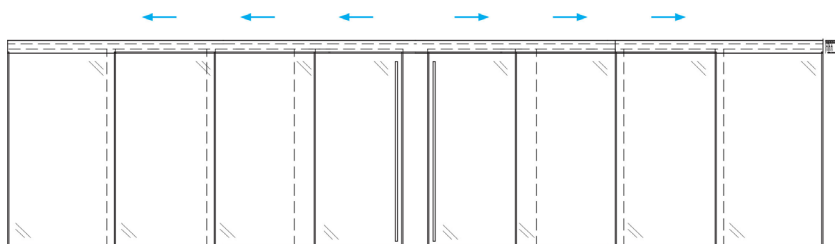
LEFT + RIGHT STACK

EXPO's floating panels telescope in one direction. Select your preference for a right-or left-stack to fit your design intent.



GUILLOTINE SPLIT

Create symmetry with two telescoping systems that meet in the middle, and design a double-wide opening.



MATERIAL FINISHES

Muraflex offers 15 carefully-selected, design-savvy standard extrusion finishes and colors, the most popular being clear anodized aluminum. EXPO is designed to receive any panel material with a thickness ranging anywhere between 3/8" to 1/2", whether it is in glass, wood or plastic.

GLASS PANELS

CLEAR TEMPERED
FROSTED
LAMINATED
LOW IRON
ULTRA CLEAR
STAR FIRE
WRITEABLE
ETC

SOLID PANELS

WOOD VENEER
(fixed panel only)
PLASTIC LAMINATE
ACRYLIC
ETC

RECOMMENDED PANEL SIZES

3/8" THICKNESS
UP TO 4'-0"W x 9'-0"H

1/2" THICKNESS
UP TO 5'-0"W x 10'-0"H

Larger custom sizes are available.
Please contact us to discuss your specific needs.



HARDWARE

As with our MIMO system, a locking system designed to accept standard American keyways can be incorporated in the hardware, with option to lock into the floor or directly into the top track. The specification of custom hardware to meet the client's design intent is possible upon approval from Muraflex.

EXPO's top valence is 6" high in order to dissimulate its intricate track system. To ensure the best acoustic ratings, the valence is designed to receive an efficient acoustic treatment and each wall panel is individually equipped with an acoustic seal.

EXTRUSIONS

POWDER COAT GLACIER WHITE
GROUP 1

POWDER COAT LIGHT GRAY
GROUP 1

POWDER COAT TAUPE
GROUP 1

POWDER COAT CHARCOAL
GROUP 1

POWDER COAT BLACK
GROUP 1

POWDER COAT CUSTOM COLOR
GROUP 2

ANODIZED CLEAR
GROUP 1

ANODIZED CHAMPAGNE
GROUP 2

ANODIZED LIGHT BRONZE
GROUP 2

ANODIZED BLACK
GROUP 2

ANODIZED ARCHITECTURAL BRONZE
GROUP 4

FAUX BOIS LIGHT OAK
GROUP 3

FAUX BOIS DOUGLAS FIR
GROUP 3

FAUX BOIS WARM CHERRY
GROUP 3

FAUX BOIS CHESTNUT
GROUP 3

FAUX BOIS WALNUT
GROUP 3

MURAFLEX

Muraflex focuses solely on the demountable wall industry, aiming for the improvement of the work environment and is dedicated in delivering full turn-key solutions at all times. Although inspired from European style, all Muraflex products are designed and manufactured in North America — all design, engineering, product development and functionality is done in-house. With many installations in every major North American metropolitan area, Muraflex has an important presence on the market.

Muraflex understands that some projects call for additional coordination and, when required, offers on-site project management services with their team of available and highly-experienced project managers. The standard lead time for EXPO is from 6 to 8 weeks after reception of field measurements and approved shop drawings.

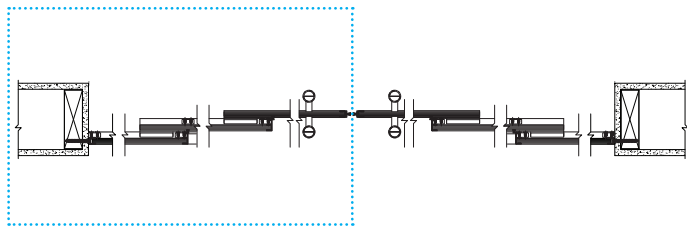


INSTALLATION

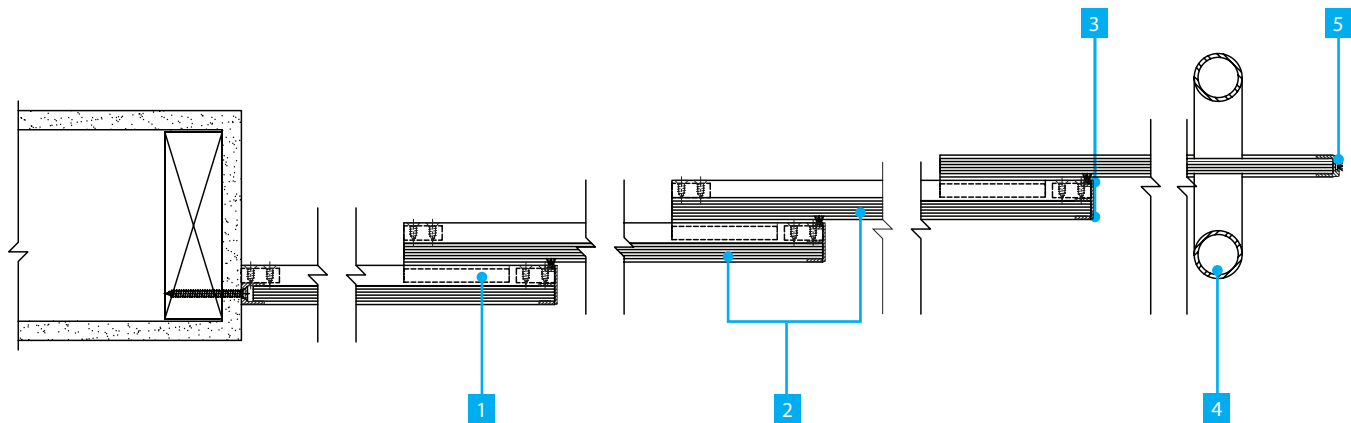
Because time is always of the essence during the installation phase of every project, Muraflex developed a packaging and shipping system that makes the unloading and placing of extrusions easier as each elevation is packaged separately and identified with the room and elevation number it belongs to. Our glass is also identified in the same way with a tag identifying the room and elevation number. In addition, Muraflex performs any machining necessary in the factory prior to shipping, therefore eliminating this step from being done in the field, reducing the installation time for EXPO to approximately 1 h 45 minutes per linear foot.

CONSTRUCTION DETAILS - 1

PLAN DETAIL détail du plan

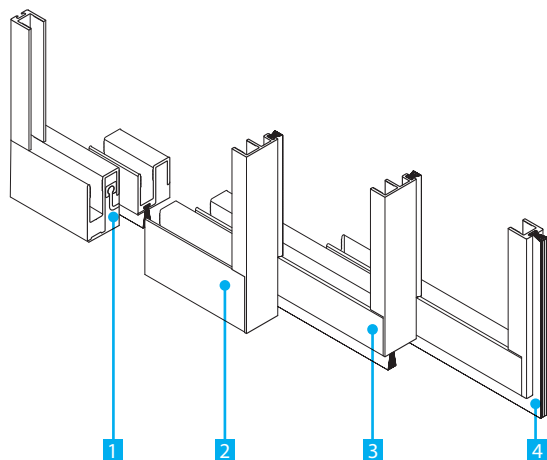


- 1. RAIL HOOK WITH PVC SLIDER
glissière avec insertion en PVC
- 2. TEMPERED GLASS
verre trempé
- 3. 1" TRACK SOUND STOP
coupe-son de 1"
- 4. TUBULAR HANDLE
bâton maréchal
- 5. ACOUSTIC TRIM MOLDING
moulure d'insonorisation

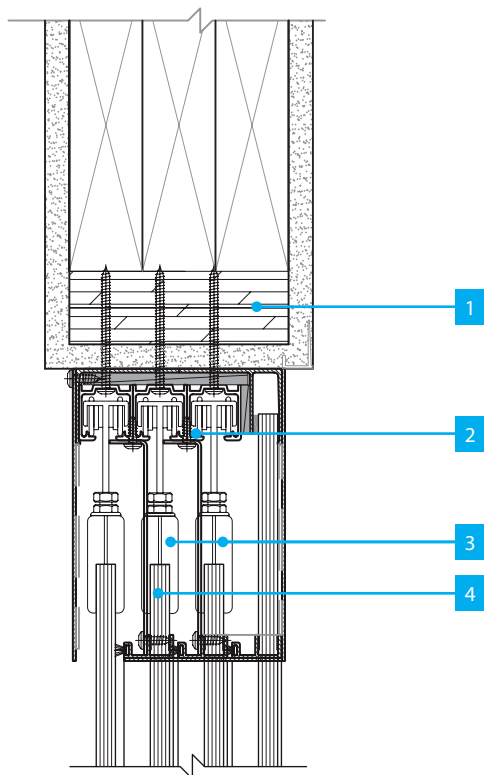


ISOMETRIC DETAIL détail isométrique

- 1. ALUMINIUM DOOR-STOP
butoir de porte en aluminium
- 2. SILL EXTRUSION FOR FIXED GLASS
lisce pour verre fixe
- 3. RAIL HOOK WITH PVC SLIDER
glissière avec insertion en PVC
- 4. SOUND STOP
coupe-son



CONSTRUCTION DETAILS - 2



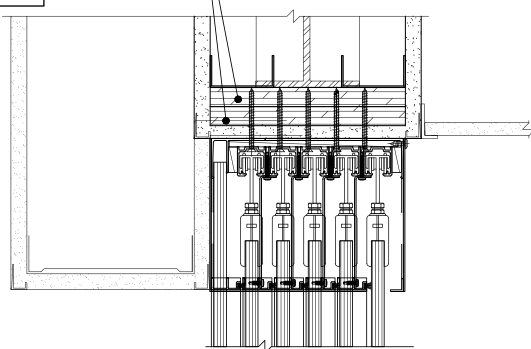
ADJUSTABILITY DETAIL détail de réglage

1. BLOCKING AND STRUCTURAL SUPPORT VARIES BASED ON SPAN SIZE OR OPENING (SUPPLIED BY OTHERS)
renforcement structurel varie selon l'ouvrir (non fourni)
2. SLIDING DOOR RAIL
glissière de porte coulissante
3. 1" OF ADJUSTABILITY ALLOWED WITHIN TRACK SYSTEM
1" d'ajustement disponible à l'intérieur du système
4. TRACK SOUND STOP SYSTEM
système de coupe-son

CONCEALED VALANCE OPTIONS:

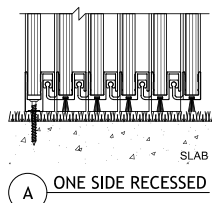
NOTES:
- GENERAL CONTRACTOR TO PROVIDE A STRUCTURE DESIGNED TO SPAN AND SUPPORT THE WEIGHT OF TELESCOPIC DOOR, WITH A MAXIMUM DEFLECTION OF $\frac{1}{8}"$
- STRUCTURAL BEAM MUST BE SUPPORTED BY COLUMNS TO THE FLOOR AND NOT TO THE SLAB OR STRUCTURE ABOVE

NOTE FOR GENERAL CONTRACTOR
2x 3/4" PLYWOOD TO PROVIDE HARD SCREWABLE BACKER FOR ALL MURAFLEX'S ATTACHEMENTS



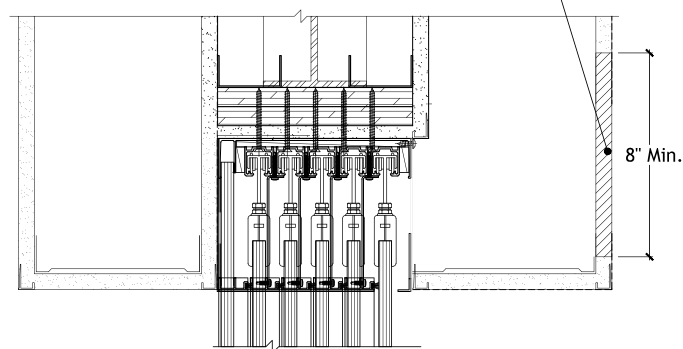
HALLWAY

CONFERENCE ROOM



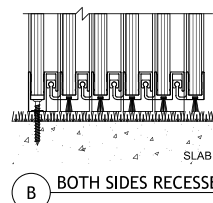
A ONE SIDE RECESSED

NOTES:
- REMOVABLE
ACCES PANEL FULL LENGTH OF TELESCOPIC WALL



HALLWAY

CONFERENCE ROOM



B BOTH SIDES RECESSED