

# FINO

# muraflex

---

## FINO stands for “thin” in Italian

FINO’s narrow profiles and carefully-engineered concealed hardware allows for a maximum glazed surface, which contributes to an optimal working environment. FINO takes into account limitless tailoring options, enhanced acoustical performance, sleek and slender aesthetics as well as ease of installation thanks to its few universal profiles.

Its clean and simple design provides a timeless look!

---



---

## GLASS

Available with 3/8” and 1/2” glass, FINO’s system is engineered to go up to 10’-0” in height. Standard glass panel widths reach up to 4’-4” in both 3/8” and 1/2” glass.

## PROFILES

FINO was designed with a sophisticated aesthetic in mind. Its slender profile measuring 2-3/8”H x 1”W welcomes carefully-conceived, transparent gaskets in order to achieve the best STC ratings.

## STC

FINO is able to respond to a wide range of acoustic requirements, from STC 36 to STC 42, depending on wall configuration.

---

## SUSTAINABILITY

Muraflex is a GREENGUARD and GREENGUARD GOLD certified company. MIMO frames are made from fully recyclable aluminum as well as Muraflex’s proximity makes FINO a more sustainable option for your project. All attributed credits and LEED points have been pre-calculated and all supporting documentation is available upon request.

---

# MATERIAL FINISHES

Muraflex offers 17 carefully-selected, design-savvy standard extrusion finishes and colors, the most popular being clear anodized aluminum. Requiring no silicone, FINO is a butt joint system which uses multiple slender and simple trim pieces to join panels together. As FINO's profiles can be adjusted to receive any panel material with a thickness ranging anywhere between 3/8" to 1/2", the possibilities are almost endless.

## GLASS PANELS

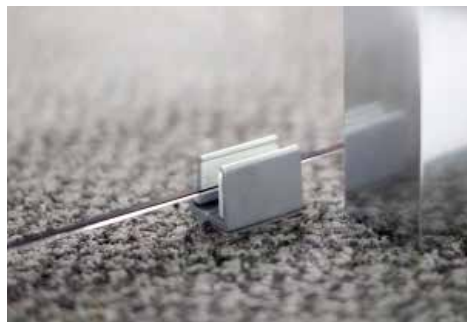
CLEAR TEMPERED  
FROSTED  
LAMINATED  
LOW IRON  
ULTRA CLEAR  
STAR FIRE  
WRITEABLE  
ETC

## SOLID PANELS

WOOD VENEER  
FABRIC TACK  
PLASTIC LAMINATE  
ACRYLIC  
DECOR METAL  
VINYL COVERED DRYWALL  
PAINTED DRYWALL  
ETC

## TRIM (BETWEEN GLASS PANELS)

ALUMINUM (ALL FINISHES)  
POLYCARBONATE  
GLASS TO GLASS (NO TRIM)



# EXTRUSIONS

**POWDER COAT GLACIER WHITE**  
GROUP 1

**POWDER COAT LIGHT GRAY**  
GROUP 1

**POWDER COAT TAUPE**  
GROUP 1

**POWDER COAT CHARCOAL**  
GROUP 1

**POWDER COAT BLACK**  
GROUP 1

**POWDER COAT CUSTOM COLOR**  
GROUP 2

**ANODIZED CLEAR**  
GROUP 1

**ANODIZED CHAMPAGNE**  
GROUP 2

**ANODIZED LIGHT BRONZE**  
GROUP 2

**ANODIZED MEDIUM BRONZE**  
GROUP 4

**ANODIZED ARCHITECTURAL BRONZE**  
GROUP 4

**ANODIZED BLACK**  
GROUP 2

**ANODIZED POLISHED ALUMINUM**  
GROUP 2

**FAUX BOIS LIGHT OAK**  
GROUP 3

**FAUX BOIS DOUGLAS FIR**  
GROUP 3

**FAUX BOIS WARM CHERRY**  
GROUP 3

**FAUX BOIS CHESTNUT**  
GROUP 3

**FAUX BOIS WALNUT**  
GROUP 3

# DOORS & HARDWARE

FINO demountable walls can be configured with a wide variety of door options; sliding, hinged or pivoting, in glass or wood, framed or frameless, and with locking or non-locking hardware. FINO's fully framed pivot doors are unique and provide a high acoustical performance.

FINO's locking hardware is designed to accept standard American keyways, and can easily be adapted to receive card reader systems, such as magnetic locks, electric strikes, etc. The specification of custom hardware to meet the client's design intent is possible upon approval from Muraflex.

As a unique feature and in keeping with a clean design aesthetic, FINO's sliding door hardware is concealed within its frame.

---

## MURAFLEX

Muraflex focuses solely on the demountable wall industry, aiming for the improvement of the work environment and is dedicated in delivering full turn-key solutions at all times. Although inspired from European style, all Muraflex products are designed and manufactured in North America — all design, engineering, product development and functionality is done in-house. With many installations in every major North American metropolitan area, Muraflex has an important presence on the market.

Muraflex understands that some projects call for additional coordination and, when required, offers on-site project management services with their team of available and highly-experienced project managers. The standard lead time for FINO is from 6 to 8 weeks after reception of field measurements and approved shop drawings.

---



---

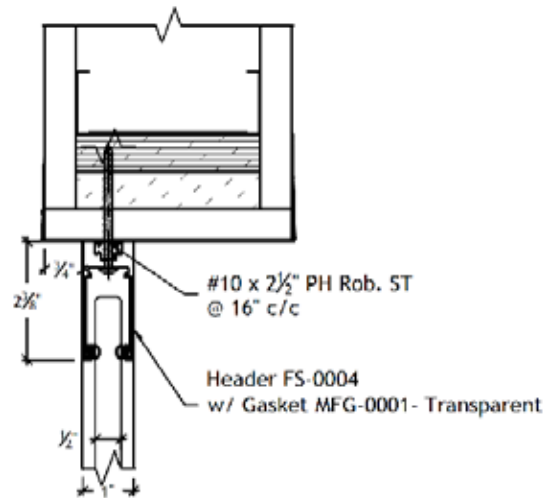
## INSTALLATION & ADJUSTABILITY

Because time is always of the essence during the installation phase of every project, Muraflex developed a packaging and shipping system that makes the unloading and placing of extrusions easier as each elevation is packaged separately and identified with the room and elevation number it belongs to. Our glass is also identified in the same way with a tag identifying the room and elevation number. In addition, Muraflex performs any machining necessary in the factory and prefabricates FINO's framed pivot doors prior to shipping, therefore eliminating any door assembly from being done in the field, reducing the installation time for FINO to approximately 1 hour per linear foot. To further facilitate its installation, FINO frames allow for total traveling of 1-1/4". FINO is designed to be installed on bulkhead ceiling in order to offer the best acoustical performance.

---

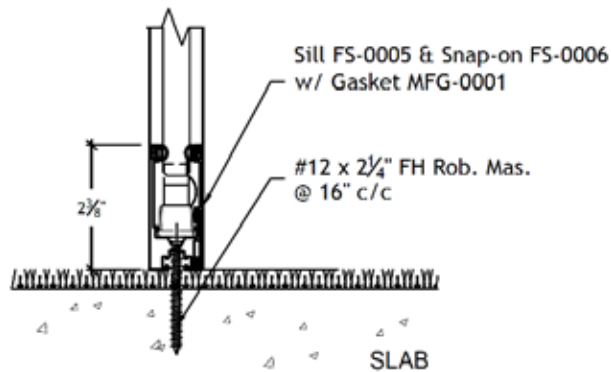
# CONSTRUCTION DETAILS

## CEILING ATTACHMENTS:



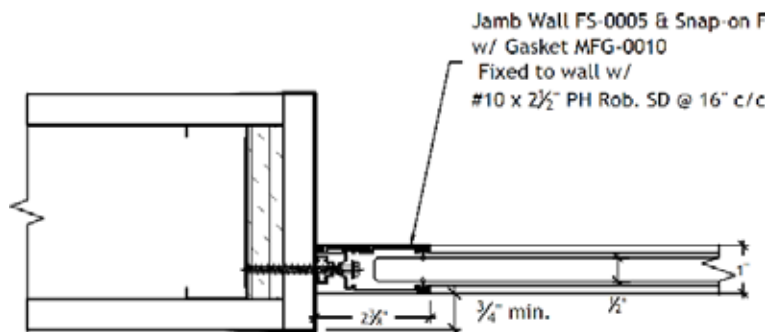
Bulkhead condition  
(2 x 3/4" plywood blocking required)

## FLOOR ATTACHMENTS:



Can be fastened directly to the concrete slab or over carpet flooring

## WALL JAMB ATTACHMENT:



To ensure the system is stable, 1 x 3/4" plywood blocking is required in support construction

**Note: General Contractor to provide necessary blocking, bracing and support required to receive our products.**

Designed in collaboration with Gensler